



Kingsfield News

Learn Together, Play Together, Succeed, Together

Part of the  Children First Learning Partnership

Inspiring Excellence Together

17th July 2020

Diary Dates For Parents

First day back at school

Wednesday 2nd September

School Photos

Wednesday 30th September

Please note that due to Covid-19 no sibling photos will be done on this date, individual photos only. A day will be scheduled for sibling photos at a later date.

October Half-Term

26th October - 30th October

Christmas Break

21st December - 1st January

February Half-Term

15th February - 19th February

Easter Break

2nd April - 16th April

May Half-Term

31st May - 4th June

May Day

Monday 3rd May

Inset Day

Monday 7th June

Summer Break

19th July - 31st August



Visit our Twitter page for more pictures of this week's events @KingsfieldSch

A must watch is our special farewell to our Y4 leavers on twitter.
Good luck and best wishes to Year 4!

End of year

Many thanks for your continued cooperation and support during which has been a very challenging time for us all. We have been working very hard to prepare our school environment for the safe return of all our children in September.

We currently have a large number of our children back in school and we are very confident that the systems in place will work well to ensure we all keep safe. I would be very grateful if you could spend some time reading the following information to ensure you all support us appropriately and keep safe on your return.

We re-open to children on **Wednesday 2nd September and full time attendance will be compulsory.**

Symptoms of COVID 19

It is **absolutely vital** that if you, your child or someone in your household has any of the following symptoms you must stay at home and **inform us immediately and organise a test.**

A high temperature

A loss of, or change to, your sense of smell or taste

A new continuous cough

If your child displays any of the above symptoms we will isolate them in our isolation room and request you are available to collect immediately.

Social Distancing

Please adhere to social distancing and abide by the one way system of arriving onto the playground and departing via the school drive.

The only exception to this, is the afternoon Nursery parents on drop off.

Please encourage your child to walk with you, as we are minimising the risk of children mixing, in different bubbles whilst in school.

Please be reminded that **only one adult** brings their child to school and please ensure you drop off and leave the school site promptly. You must keep to the times stated below, avoiding coming onto the school site early. We request that you do not stop to chat to other parents as we need to keep the staggered drop off times running smoothly and to time.

Bubble Bases

A bubble is the name we are using for our groups of children and staff. In our case each class is a bubble. Bubble members will eat together, learn together and go out to play together (whilst social distancing) this reduces mixing and therefore reduces risk. Within each classroom social distancing will be relaxed, including the sharing of resources but once children are moving around the school social distancing measures between bubbles will be established.

Communication

We value contact from you and know that communication is vital for us all to feel your children are happy, safe and well. However we need to reduce face to face contact between you and our staff. Please continue to use the school text service, phone, and class email to communicate with us and we assure you that if we have any concerns regarding your child we will contact you immediately. Please avoid using the school office in person. Meetings with staff can be arranged by appointment if necessary.

What does your child need to bring to school with them?

Children must attend **in uniform** and we request clean clothes are worn every day. Children need to bring a coat (weather permitting,) a water bottle (which will need to be taken home to wash each night) and finally those bringing their own lunch need to bring it in a disposable bag. **PE kits will be required in school just on the day of lessons.**

Children **must not** bring anything else to school including pencil cases, school bags, phones or soft toys etc.

Dinners

Our lunch menu is available on the school website - <http://kingsfield.staffs.sch.uk/lunch-menu/>. Please talk this through with your child as each morning they will choose their meal and it will be delivered to the classroom for them. If you pay for meals please ensure your parentpay account is up to date. Please note the menu could be subject to change due to the unavailability of some foods.

Before and After School Care

We will be offering a before and after school care facility where we will be adhering to social distancing. **We can only have children who are BOOKED in in ADVANCE so please call or email the office if you wish to book your child in via office@kingsfield.staffs.sch.uk - bookings need to be made on a weekly basis.**

PPE and Cleaning Arrangements

The school has provided the staff with access to aprons, gloves, masks and face shields. Staff will be asked to wear all PPE when dealing with a child who has had an accident, is poorly or is showing any symptoms of COVID19. Beyond this staff can wear whatever PPE they feel safe and comfortable in.

The site has been thoroughly deep cleaned. Our class bubble bases will all have a cleaning kit and tables will be cleaned frequently. Tissues, swing lid bins and hand sanitiser will be available in each base for frequent use. Additional cleaning of toilets and other equipment will be carried out throughout the school day. Hand dryers have been turned off and all toilets will be provided with additional paper towels, bins and soap.

On our school website, additional information can be found. Including our additional behavior policy guidance and covid-19 school re-opening risk assessment.

<http://kingsfield.staffs.sch.uk/covid-19-info/>

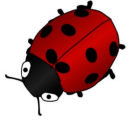
I hope that this information has helped you to understand what arrangements we have made to re-open safely. We are looking forward to welcoming your child back and I hope that you are reassured that we have taken all reasonable steps to ensure the safety of all on our school site.

Links to current DfE guidance are as follows:

<https://www.gov.uk/government/publications/coronavirus-covid-19-implementing-protective-measures-in-education-and-childcare-settings/coronavirus-covid-19-implementing-protective-measures-in-education-and-childcare-settings>

<https://www.gov.uk/government/publications/actions-for-schools-during-the-coronavirus-outbreak/guidance-for-full-opening-schools>

Welcome to Nursery Little Ladybirds



Miss Lawton

Miss Matthews

Mr Bailey

Messages From The Staff

Hi Little Ladybirds, have a lovely summer, we will hopefully be spending time in the sunshine with our families, but really looking forward to seeing you all soon.

Our first topic is called ...



P.S.

You will need to bring your PE Kit on Fridays!

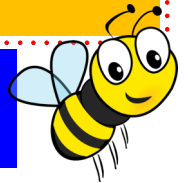
Arrival & Collection Arrangements

Entrance:- Rear Nursery door

Morning Sessions Drop off time :- 9.15am & Pick up: 11.45pm - enter the playground and exit via the school drive

Afternoon Session Drop off Time:- 12.30pm use the school drive to drop off & **pick up at 3.15pm**

Welcome to Reception Busy Bees



Messages From The Staff

Hi Busy Bees, over the summer we will all be enjoying spending time with our families, but what we are most looking forward to is seeing you all in September!

Our first topic is called...



P.S You will need to bring your PE kit on a Wednesday!

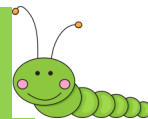
Arrival & Collection Arrangements

Entrance:- Front early Years Door (by the play park)

Drop off time :- 8.45am Pick up: 3:10pm

Enter the school playground, queue keeping your social distancing and exit via the school drive to maintain the way one traffic system.

Welcome to Reception Clever Caterpillars



Messages From The Staff

Hi Clever Caterpillars, we hope you have a lovely summer. We are hoping to spend some hot sunny days walking with our families and dogs. We can't wait to see you all in September!

Our first topic is called...



P.S You will need to bring your PE kits on Wednesdays!



Mrs Mullock

Miss Hill

Arrival & Collection Arrangements

Entrance:- coloured picket fence

Drop off time :- 8.45am Pick up: 3:10pm

Enter the school playground, queue keeping your social distancing and exit via the school drive to maintain our way one traffic system.

Welcome to Year 1 Charming Cheetahs



Messages From The Staff

Hi Charming Cheetahs, we hope you have a fantastic summer getting ready to join us in Year 1! Over the summer we are hoping to spend lots of time with our families and some exciting days out too!

Our first topic is called...



P.S You will need to bring your PE kits on Thursdays!



Mrs Gray

Mrs Rutter

Mrs Beeston

Arrival & Collection Arrangements

Entrance:- Year 1 door—Far building, right hand door.

Drop off time :- 8.50am Pick up: 3:15pm

Enter the school playground, queue keeping your social distancing and exit via the school drive to maintain our way one traffic system.

Welcome to Year 1 Terrific Tigers



Messages From The Staff

Hi Terrific Tigers, hope you have a lovely summer holiday and get ready for a super start to Year 1! We are planning lots of lovely long walks with our family and maybe getting away for a few days to the countryside. We are really looking forward to seeing you all very soon!

Our first topic is called...



P.S You will need to bring your PE Kits on a Thursday!



Mrs Tomlinson



Mrs Rutter

Arrival & Collection Arrangements

Entrance:- Year 1 door—Far building, right hand door.

Drop off time :- 9.00am Pick up: 3:25pm

Enter the school playground, queue keeping your social distancing and exit via the school drive to maintain our way one traffic system.

Welcome to Year 2 Perfect Panthers



Messages From The Staff

Hi Perfect Panthers, hope you have a fabulous summer holiday and that you are excited about coming into Year 2! We are really excited to see you all in September. Over the summer, we will both be spending time with our families and hopefully getting away for a few nights!

Our first topic is called...



P.S You will need to bring your PE Kits on a Tuesday!



Miss Mohring



Mrs Stevens

Arrival & Collection Arrangements

Entrance:- Year 2 door—Far building, left hand door.

Drop off time :- 9.00am Pick up: 3:25pm

Enter the school playground, queue keeping your social distancing and exit via the school drive to maintain our way one traffic system.

Welcome to Year 2 Learning Lions



Messages From The Staff

Hi Learning Lions, hope you are all excited and ready for Year 2! We can't wait to see you all in September to enjoy our busy learning! Over the summer we are both heading off on camping /caravanning holidays and we are looking forward to spending some time with our families. See you soon!

Our first topic is called...

P.S You will need to bring your PE Kits on Tuesdays!



Mrs Nesbit



Mrs Stevens

Arrival & Collection Arrangements

Entrance:- Year 2 door—Far building, left hand door.

Drop off time :- 8.50am Pick up: 3:15pm

Enter the school playground, queue keeping your social distancing and exit via the school drive to maintain our way one traffic system.

Welcome to KS2 Super Squirrels



Messages From The Staff

Hi Super Squirrels, hope you all have a wonderful summer and have lots of rest before you come back into Key Stage 2 in September! We are really looking forward to seeing you very soon! Over the holidays we are planning to spend lots of time with our family and visit some lovely places!

Our first topic is called...



P.S You will need to bring your PE Kits on Fridays!



Miss Price



Mrs Cleaver

Arrival & Collection Arrangements

Entrance:- Front door—along the front school path

Drop off time :- 8.55am Pick up: 3:20pm

Please follow the arrows and keep to the right along the path to maintain social distancing. Feel free to walk on the front grass once dropped off to maximise social Distancing. To keep to the one way system, please exit via the playground and school drive.

Welcome to KS2 Wise Owls



Messages From The Staff

Hi Wise Owls, hope you have a brilliant summer and a big rest before you come into Key Stage 2! We are really looking forward to seeing you all in September! This summer we are looking forward to having some days out with our families and hopefully enjoying some lovely sunshine! See you soon!

Our first topic is called...



P.S You will need to bring your PE kits on a Monday!



Mrs Bickerton Mrs Berrisford

Arrival & Collection Arrangements

Entrance:- playground ramp entrance

Drop off time :- 8.55am Pick up: 3:20pm

Enter the school playground, queue keeping your social distancing and exit via the school drive to maintain our way one traffic system.

Welcome to KS2 Fantastic Foxes



Messages From The Staff

Hi Fantastic Foxes, we hope you have a lovely summer and you have lots of fun getting ready to return in September into Key Stage 2. We are really looking forward to seeing you all soon! Over the summer we are hoping to have a some lovely days out and about and visiting our friends and families.

Our first topic is called...



P.S You will need to bring your PE Kits on Mondays.



Miss Day Mrs Cliffe

Arrival & Collection Arrangements

Entrance:- Staff room door entrance

Drop off time :- 8.55am Pick up: 3:20pm

Enter the school playground, queue keeping your social distancing and exit via the school drive to maintain our way one traffic system.

School Uniform

Our school uniform supplier is Smart School Uniform - <https://www.smartacademyuniform.co.uk/>

Orders can be made via their website, over the phone or emailing them.

Boys - Dark grey trousers, white polo shirt, navy blue jumper, black school shoes.

Girls - Dark grey trousers/skirt/Pinafore dress, white polo, navy blue jumper/cardigan and black school shoes.

PE Kit - White t-shirt and blue shorts

All of the staff sincerely wish you a very safe and peaceful summer break.

The home-learning communication over these weeks has been wonderful to see and the returning children and been an absolute joy to teach.

We are looking forward to seeing you all again in September and we wish all the Year 4 pupils all the very best of luck for Middle school.

ASMSports
SUMMER 2020
FEELGOOD
HOLIDAY CLUBS
Thursfield Primary School

Guiding children back in to playing sports and physical activity within a COVID safe environment.

- Week 1 **THE RETURN**
- Week 2 **GET MOVING**
- Week 3 **THOUGHTS & FEELINGS**
- Week 4 **HELPING HAND**
- Week 5 **COOL SKOOL**
- Week 6 **LETS REMINISCE**

BOOKING YOUR PLACE JUST GOT EASIER!

- 1 Register An Account
- 2 Find Your Venue
- 3 Select Your Days
- 4 Confirm Your Booking

Please ensure that you register your children's details on our website even if you have completed your booking via telephone, email or social media.

At the click of a button you can organise your entire summer holiday childcare. Our online system makes the booking process easy, efficient and stress free.

Until our online system is launched we will be taking bookings via: **01782 366332** **info@asmports.co.uk** **inbox ASM Sports**

Launches July 20

Enhanced DDB | Facebook Live Ad | Supporting Children | Other Liability Insurance

Tel: 01782 366332 | Email: info@asmports.co.uk | Web: www.asmports.co.uk

Pricing
Our short term pricing considers the introduction of additional safety procedures in order to ensure that we can provide a secure environment.
***4 year olds eligible for half days only**

First Half Half Day AM 09:00 - 12:15 £12.00	Full Day AM To PM 09:00 - 15:30 £20.00	Second Half Half Day PM 12:15 - 15:30 £12.00
Kick Off Wrap Around AM 08:00 - 09:00 £4.00	Extra Time Wrap Around AM 15:30 - 17:00 £4.50	

15% OFF
When booking a full week.

10% OFF
All additional sibling bookings.

Social Bubbles
Children assembled into age-specific groups that remain consistent daily (where possible).

Bubble Boss
Nominated staff will remain with their bubble throughout the summer (excluding illness and annual leave).

Hand Hygiene
Regular washing of hands during regular intervals of the day will be consistently adhered to.

Essentials
Only food, drink and clothing permitted into the club - all belongings stored in personalised storage bags provided.

Bubble HQs
Groups assigned to a home base where belongings are kept and breaks take place.

2m Social Distancing
All aspects of the day adapted to ensure that activities, drop-off and collection are completed safely.

Sanitisation
Measures put into place for frequent spot cleaning of equipment, surfaces and other key contact points.

First Aid
Permission will be sought from parent/carer to provide First Aid - staff will wear PPE to administer treatment.

We would like to say a huge thank you to the staff who are leaving us at the end of this term.

Miss Hill (Year 1) will be joining the team at The Reginald Mitchell Primary School and Mrs Harnett is joining the team at Oxhey First School so they aren't going far!

We would like to wish Miss Jackson the best of luck with her future plans.

Thank you for all of your help this year, you will be missed!