



Year 2

Please find today's learning tasks below.

The table below explains the tasks and you will find the resources underneath.

Your child will know which challenge they usually access in each subject and which task will be appropriate for them.

Year group: 2				Date: 24.06.20			
English	Share the link here and learn all about another famous London landmark https://www.youtube.com/watch?v=fKmpld1PoPQ&safe=active						
	Now read a Fact File below and learn more about Big Ben.						
	Challenge 1		Challenge 2		Challenge 3		
	Use the information you have watched and the information on the fact file to complete a page about Big Ben – remember you can use headings and sub-headings on your page. (see sheet below for layout – or create your own page including Headings / Sub-Headings and Pictures)						
Maths	Warm Up – follow this link to complete your maths warm up.						
		https://www.topmarks.co.uk/maths-games/daily10					
	Choose Level 2 Complete the Ordering activities.						

	Challenge 1	Challenge 2	Challenge 3
	Share the PPT on the website to complete activities based on measuring in kilograms and then complete the problems and reasoning task sheets below.		
Reading	Log in to Oxford Owl and continue to read the text 'Chamber of Treasures' read / listen to the text from page 10 – 15 (Chapter 3).		
Phonics	Click on the link http://www.ictgames.com/mobilePage/forestPhonics/index.html Phonics Forest spelling words – choose the o-e activity today.		
Other	<p>Today we are going to start to plan some Science</p> <p>Share the link below to remind you of materials https://www.youtube.com/watch?v=XnkQcP-RHCw&safe=active</p> <p>Can you find different objects from around the house made from; Wood – Glass – Paper – Metal – Plastic</p> <p>Draw a picture of each object and write about why it is a suitable material for the object to be made from</p> <p> e.g. The jam jar is made from glass. It is a good material because it is strong, you can see through it (transparent) and it can be recycled.</p>		

Unless otherwise specified, please complete the tasks in either your home learning book or print out the document below.

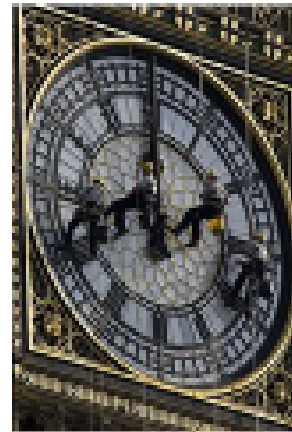
Big Ben



Big Ben is the name given to the large bell inside the clock tower of the Palace of Westminster (also known as the Houses of Parliament). The tower was built by Charles Barry after the old one was destroyed by fire in 1834.

Did you know?

The tower is over 96 metres tall!



Cold hands!

On December 31st 1962, the clock slowed down because of the ice and snow on the hands!



About time!

The clock was finished in 1854, but the tower wasn't completed until 1859 so for 5 whole years they had nowhere to put the clock!

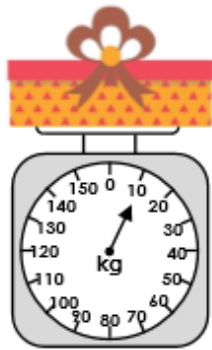
The hour hand on the clock is nearly 3 metres long and the minute hand is over 4 metres long! These men are cleaning the clock face.



A graphic design element consisting of two rectangular boxes with rounded corners and decorative scroll-like details at the top corners. The upper box contains a single horizontal line. The lower box contains ten horizontal lines, providing a space for writing.

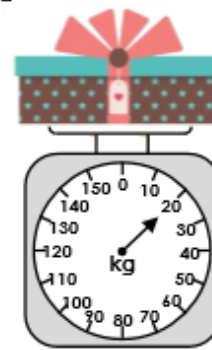
Maths Challenge 1

1a. What weight does the scale show?



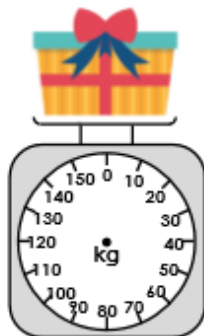
VF

1b. What weight does the scale show?



VF

2a. Add an arrow to the scale so that it shows 30kg.



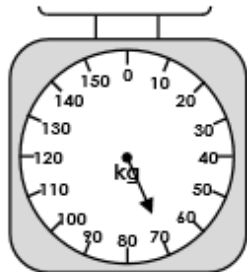
VF

2b. Add an arrow to the scale so that it shows 10kg.



VF

3a. Tick if the statement is true or false.



The scale reads heavier than 50g.

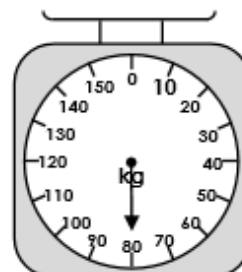
True

False



VF

3b. Tick if the statement is true or false.



The scale reads lighter than 90kg.

True

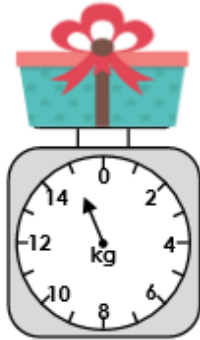
False



VF

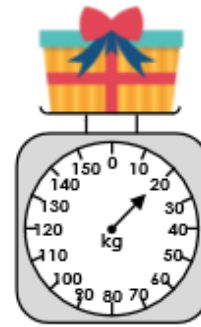
Maths Challenge 2

5a. What weight does the scale show?



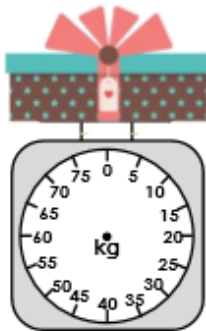
VF

5b. What weight does the scale show?



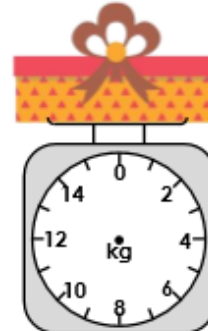
VF

6a. Add an arrow to the scale so that it shows 65kg.



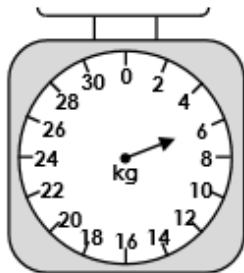
VF

6b. Add an arrow to the scale so that it shows 11kg.



VF

7a. Tick if the statement is true or false.



The scale reads lighter than 6kg.

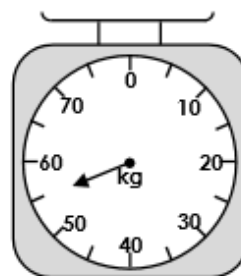
True

False



VF

7b. Tick if the statement is true or false.



The scale reads 55 kg.

True

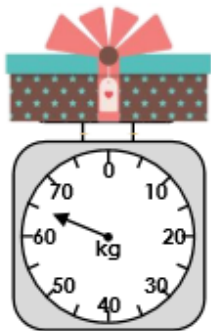
False



VF

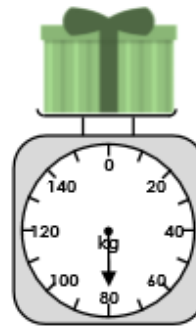
Maths Challenge 3

9a. What weight does the scale show?



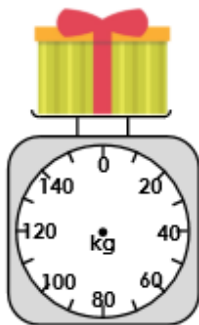
VF

9b. What weight does the scale show?



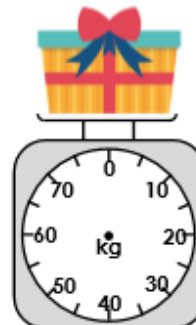
VF

10a. Add an arrow to the scale so that it shows 90kg.



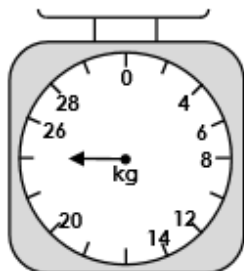
VF

10b. Add an arrow to the scale so that it shows 55kg.



VF

11a. Tick if the statement is true or false.



The scale reads 25kg.

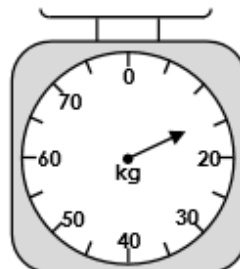
<input type="checkbox"/>
<input type="checkbox"/>

True
False



VF

11b. Tick if the statement is true or false.



The scale reads 19 kg.

<input type="checkbox"/>
<input type="checkbox"/>

True
False



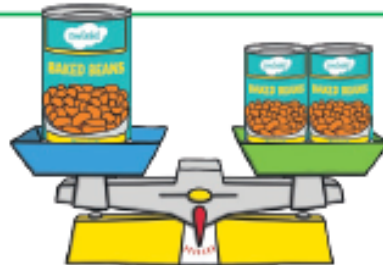
VF

Measuring Mass in Grams



A large tin of beans has a mass of 100g.

What is the mass of a small tin?



Crisps have a mass of 50g.

Nuts have a mass of 70g.

What is the mass of the raisins?

Use a 100g weight to help you find three things in the classroom that you think feel lighter than 100g. Use a scale to check.