


Year 2

Please find today's learning tasks below.

The table below explains the tasks and you will find the resources underneath.

Your child will know which challenge they usually access in each subject and which task will be appropriate for them.

Year group: 2				Date: 23.06.20			
English		Today you are going to be reading some information about The Tower of London (see sheet below)					
		Challenge 1		Challenge 2		Challenge 3	
		<p>Read all about the Tower of London and use this information to draw your own picture of the Tower of London and write a paragraph to explain all about the tower to somebody who perhaps doesn't know very much.</p> <p>Think about how to start your sentences – try to make it exciting!</p>					
Maths		<p>Click on the link http://www.wldps.com/gordons/Bingo - counting v4.swf</p> <p>Complete the Bingo activities of your choice – see if you can play with someone from your family.</p>					
		Challenge 1		Challenge 2		Challenge 3	
		<p>Today you will be continuing to learn about mass.</p> <p>Choose 5 different items from the kitchen cupboard and then put them in order from lightest to heaviest, by picking them up and comparing the weight. We call this estimation / comparison.</p> <p>If you have some scales in your kitchen (either electronic or mechanical), can you weigh the items and read the scales to check if you had put the items in the right order?</p> <p>Now complete the problems and reasoning tasks below.</p>					

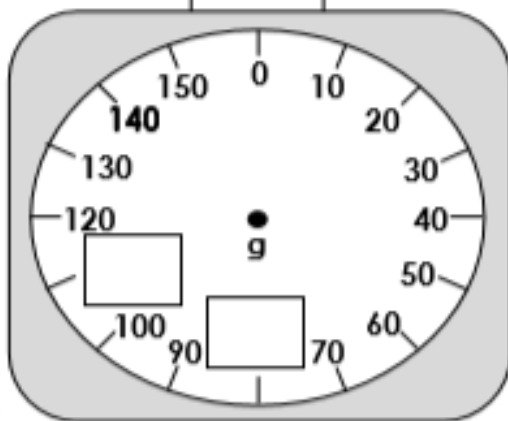
Reading	Log in to Oxford Owl and search for the text 'Chamber of Treasures' read / listen to the text up to Page 10 (end of chapter 2).
Phonics	Click on the link https://www.ictgames.com/littleBirdSpelling/ Choose the darker green bird box and practise spelling the words such as thought and caught using au/ou.
Other	<p style="text-align: center;">Today we are going to do some Art.</p> <div data-bbox="288 475 676 751"></div> <p>The Royal Standard represents the Sovereign and the United Kingdom. The Royal Standard is flown when The Queen is in residence in one of the Royal Palaces, on The Queen's car on official journeys and on aircraft (when on the ground). It may also be flown on any building, official or private, during a visit by The Queen, if the owner so requests.</p> <p>You can do any of the following;</p> <ul style="list-style-type: none">• Draw your own version of the Royal Standard• Colour the Royal Standard Activity sheet below using crayons, pastels, chalks, paint etc.• Choose one part of the flag and reproduce it in which every way you want!

Unless otherwise specified, please complete the tasks in either your home learning book or print out the document below.

Maths Challenge 1

Measure Mass in Grams

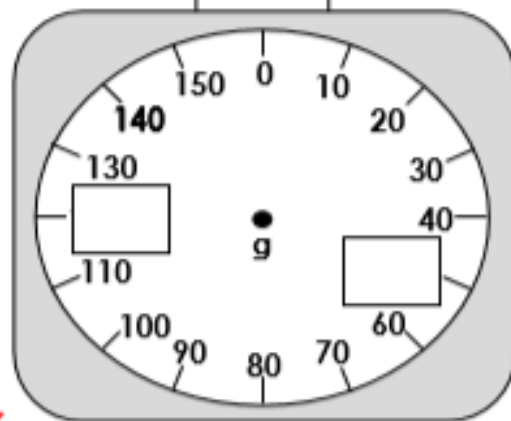
1a. Complete the missing numbers on the scale.



VF

Measure Mass in Grams

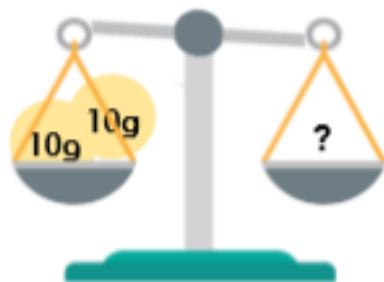
1b. Complete the missing numbers on the scale.



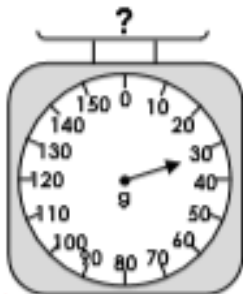
VF

2a. Join the matching pairs.

A
thirty grams



B



C



D

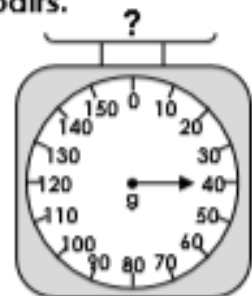


VF

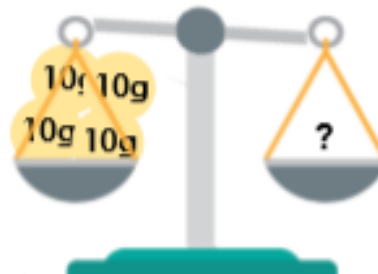
2b. Join the matching pairs.



A



B



C

D
fifty grams

D

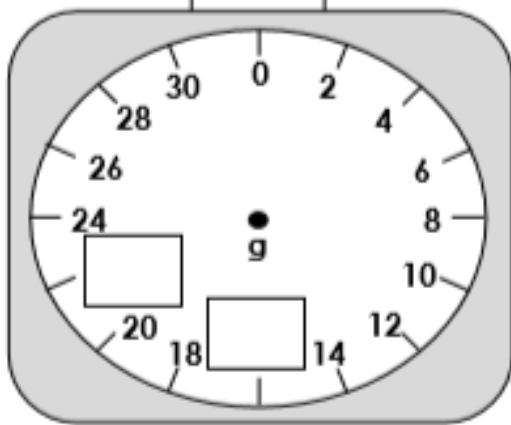


VF

Maths Challenge 2

Measure Mass in Grams

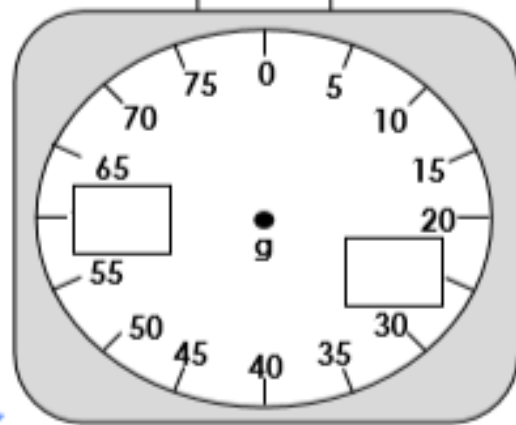
4a. Complete the missing numbers on the scale.



VF

Measure Mass in Grams

4b. Complete the missing numbers on the scale.



VF

5a. Join the matching pairs.

A
twenty-five grams

B

C

D



VF

5b. Join the matching pairs.

A

B

C

D
twenty-four grams

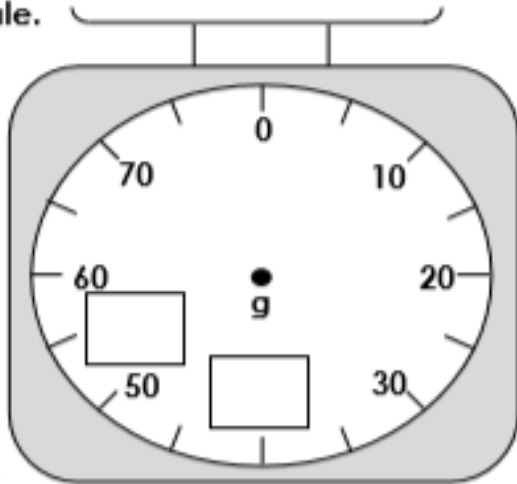


VF

Maths Challenge 3

Measure Mass in Grams

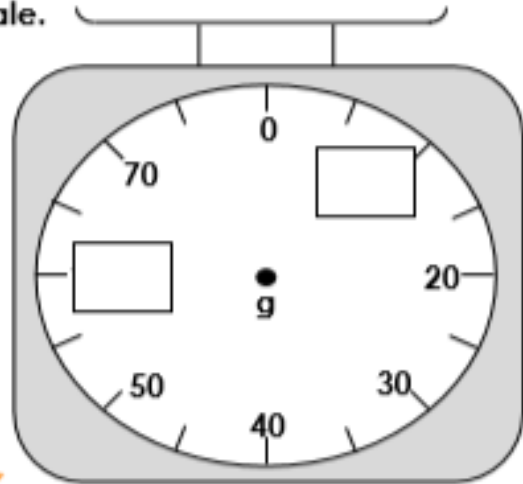
7a. Complete the missing numbers on the scale.



VF

Measure Mass in Grams

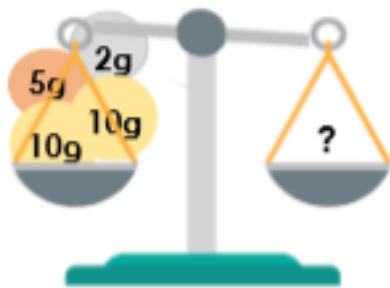
7b. Complete the missing numbers on the scale.



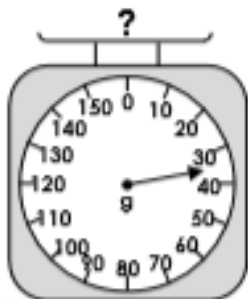
VF

8a. Find the matching pairs.

A
twenty-seven grams



B



C



D



VF

8b. Find the matching pairs.



B



C

D
twenty-six grams



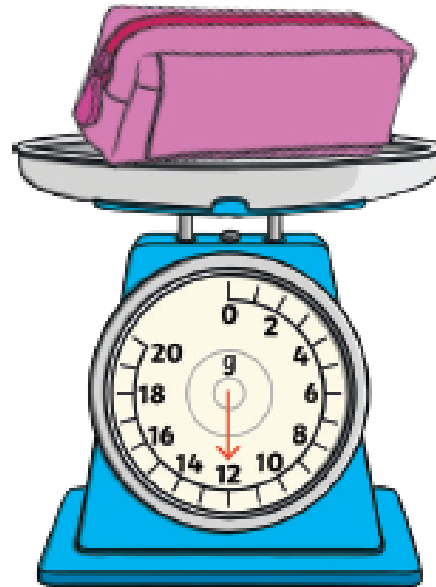
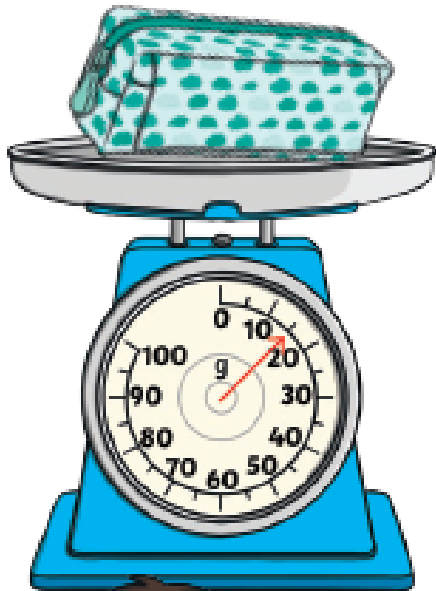
VF

Reasoning Task ALL groups

Measuring Mass in Grams



Adam is measuring the mass of two pencil cases.



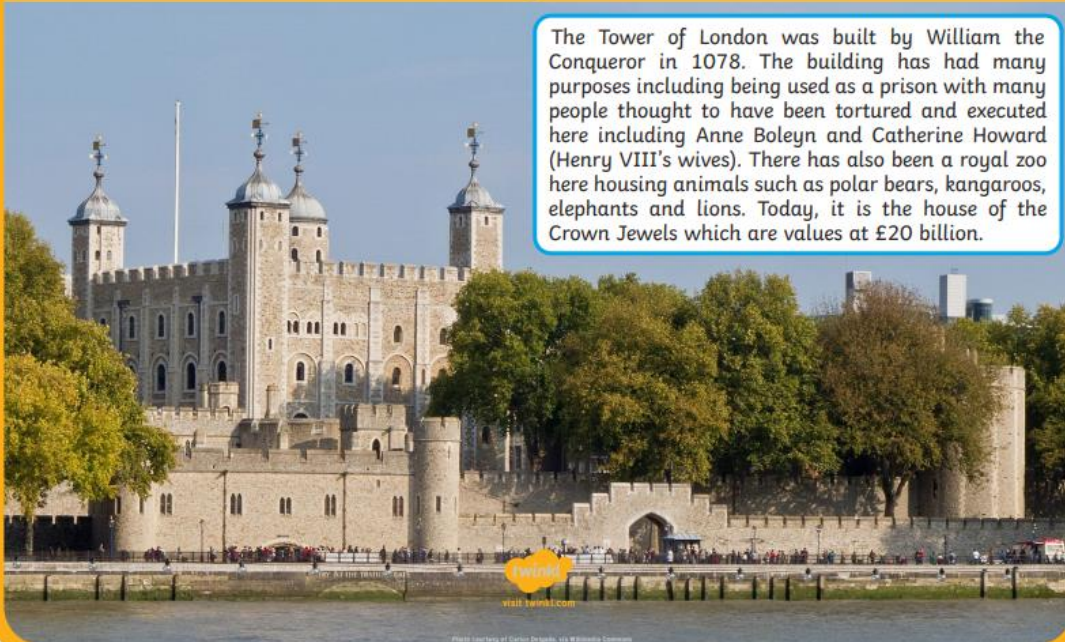
The pink pencil case has a greater mass than the spotty pencil case.

Is he correct? Prove it!

What is the difference in mass between the two pencil cases?

Can you find two items in your classroom to measure in grams? What is the difference between their masses?

Tower of London



The Tower of London was built by William the Conqueror in 1078. The building has had many purposes including being used as a prison with many people thought to have been tortured and executed here including Anne Boleyn and Catherine Howard (Henry VIII's wives). There has also been a royal zoo here housing animals such as polar bears, kangaroos, elephants and lions. Today, it is the house of the Crown Jewels which are valued at £20 billion.

The Tower of London



The first part of the Tower of London was built by William the Conqueror in 1078 but what we now call the Tower is actually a collection of several different buildings.

The Tower of London has been used for many things since it was first built. Hundreds of years ago it was most famous as a prison where some prisoners were even tortured or killed! Now it is just as famous as the home of the crown jewels which have been kept there since the year 1303.

Did you know?

The full name of the Tower of London is actually **Her Majesty's Royal Palace and Fortress**.



This was **traitor's gate**. Many prisoners of the tower were brought there by boat.

Locked up!

The most famous people to be locked up in the Tower of London were Queen Elizabeth I and Guy Fawkes.

Ghosts!

Many people say that the Tower is the most haunted building in England. The most famous ghost is said to be Anne Boleyn. She was married to King Henry VIII but in 1536 he had her head chopped off!!

Art Task

The Royal Standard

